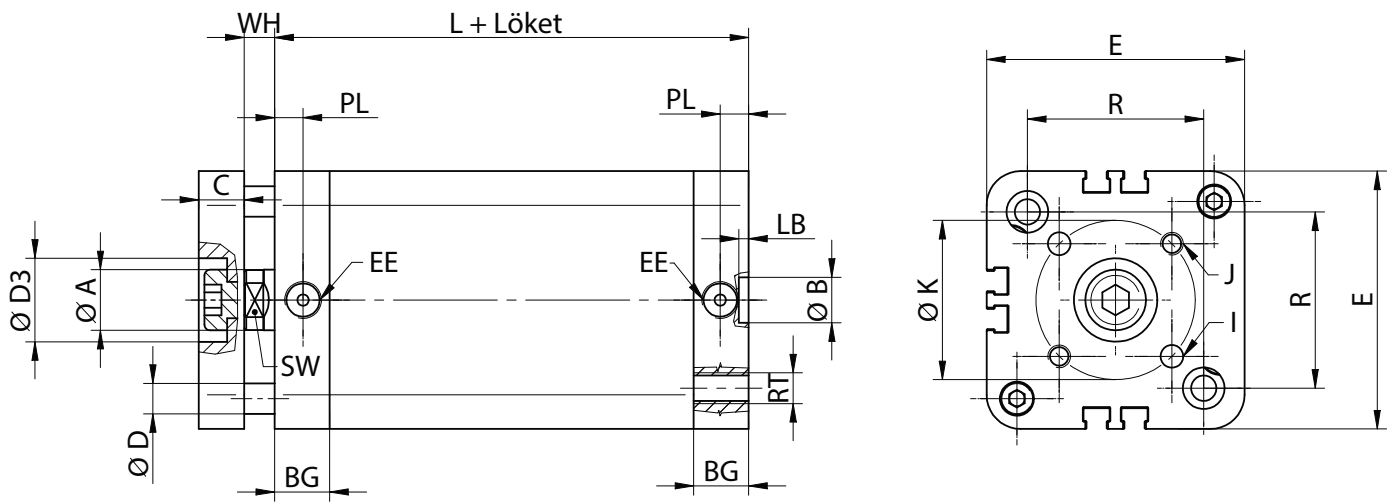


VINT



Ø [mm]	A	B	BG	C	D	D3	E	K
Ø32	12	9	14,5	10	6	17	49	28
Ø40	12	9	15	10	6 (8)*	17	55 (54,5)*	33
Ø50	16	12	14,5	12	8 (10)*	22	68 (65,5)*	42
Ø63	16	12	14	12	8 (10)*	22	78,5 (77)*	50
Ø80	20	12	15,5	14	12 (14)*	24 (28)*	98 (95,5)*	65
Ø100	25	12	20	14	12 (14)*	24 (30)*	120 (113,5)*	80

Ø [mm]	L	R	EE	LB	PL	RT	SW	WH
Ø32	44	32,5	G1/8"	7	7,5	M6	10	7 (6,5)*
Ø40	45	38	G1/8"	7	7,5 (8)*	M6	10	7
Ø50	45	46,5	G1/8"	8	7,5 (8)*	M8	13	8
Ø63	49	56,5	G1/8"	8,5	7,5	M8	13	8,5 (8)*
Ø80	54	72	G1/8"	10	7,5 (8)*	M10	17	10 (9)*
Ø100	67	89	G1/8"	10	7,5 (10,5)*	M10	22	10

*VENK, VENH, VEFK, VEFH, VENVK, VENVH, VEFVK, VEFVH, VINK, VINV, VIFK, VIFV, VBNK, VBNV, VBFK, VBFV, VINTK, VINTV hengerek esetében